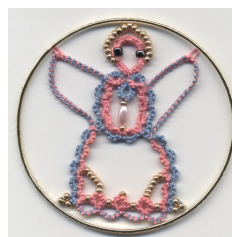




[Click here](#)



[Click here](#)

Materials required:

Number 20 thread in 2 colours, heart bead (although other beads can be substituted - see method used for small angel). Seed beads (approximately 50 for the large and 30 for the small angel), 2 black beads for the eyes and 20 gold beads for the halo. Also safety pins or paperclips for long beaded picots. The small heart shaped beads can be [bought from here](#). The bead you need is PES18. A large round or oblong bead can be substituted - please see instructions for the hands of the small angel.

The text in red and italics is for those who want to tat front side / back side.

Note - beads are added to the picots [using this method \(LBP\)](#)

Abbreviations

R	ring	SR	split ring
SH1	shuttle 1	SH2	shuttle 2
CH	chain	SS	switch shuttles
MB	move bead into place on shuttle thread	Cl	close
RW	reverse work	vsp	very small picot
+	join	Lj	lock join
BBB	move 3 beads into place	+B	add bead to picot before joining
T & C	tie and cut	LBP	long beaded picot

LCH 1st half ds as usual followed by second half ds unflipped (as in second side SR). Repeat (X) by number of times stated

Large Angel - fits a bangle measuring roughly 3" in diameter

Please note. The following dimpled ring can be substituted for the heart shaped bead. Thank you, Riet for adding this to the pattern.

1 shuttle with the same size of thread as used for the angel.

R: 1 vsp 14 vsp 5 + (last vsp) 14 vsp 1 Cl. Cut and tie. Hide ends.

Use the vsp at the point of the heart, to join in the split rings and R25 will be joined at the vsp of the dimple.

Angel

Add 2 black beads to the pink thread (SH1) for the eyes and 6 beads to SH2

Left Arm (facing) – (SH1)

- SR1: 1 vsp 3 vsp 1 / vsp 5 Cl
- SR2: 1 + (vsp SR1) 3 vsp 1 / 5 Cl
- SR3: 1 + (vsp SR2) 3 vsp 1 / 5 Cl
- SR4: 1 + (vsp SR3) 3 / 3 vsp 1 Cl

Hands

- SR5: 1 + (bottom hole of bead holding bead right way up) 1 / 6 Cl
- SR6: 1 + (bottom hole of bead holding bead right way up) 1 / 6 Cl

Right Arm

- SR7: 3 vsp 1 / 1 vsp 3 Cl
- SR8: 1 + (vsp SR7) 3 vsp 1 / 5 Cl
- SR9: 1 + (vsp SR8) 3 vsp 1 / 5 Cl
- SR10: 1 + (vsp SR9) 3 vsp 1 / 5 Cl SS

Wing 1

- LCH: X 10
- Ch: 1 - 1

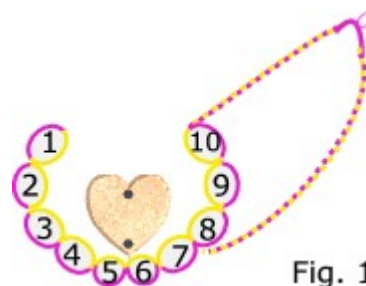


Fig. 1

LCH: X 20 Lj (vsp SR7) SLT

Skirt

SR11: 4 / 4 CI

SR12: 4 / 2 LBP (8 beads) 2 CI

SR13: 4 / 2 LBP (6 beads) 2 CI

SR14: 4 / 4 CI

SR15: 4 BBB 4 / 4 - 4 CI SS

Ch: 10 RW

R16: 3 + B (SR15) 2 + LBP (SR13) 2 + LBP (SR12) 1 LBP (5 beads) 1 - 3 CI RW

Ch: 8 RW

R17: 3 + B (R16) 1 + LBP (R16) 1 LBP (5 beads) 1 - 3 CI RW

Ch: 8 RW

R18: 3 + B (R17) 1 + LBP (R17) 1 LBP (8 beads) 2 LBP (6 beads) 2 - 3 CI RW

Ch: 10 DNRW SS

SR19: 4 BBB 4 / 4 + B (R18) 4 CI

SR20: 4 / 4 CI

SR21: 4 / 2 + (shorter LBP R18) 2 CI

SR22: 4 / 2 + (longer LBP R18) 2 CI

SR23: 4 / 4 CI SLT Lj (vsp SR4)

Wing 2

LCH: X 20

Ch: 1 - 1

LCH: X 10 Lj SLT(vsp SR1)

Body

SR24: 5 vsp 1 / 1 + (vsp SR1) 5 CI SLT RW

R25: 6 + (top hole of bead) 6 CI RW SS

Head (2 beads left on shuttle)

R26: 1 + (vsp SR25) 4 LBP (1 ¼" or 20 beads) 2 MB 18 MB

2 + (LBP) 4 vsp 1 CI SLT SS

Body

SR27: 1 + (vsp R26) 5 / 5 + (vsp SR10) 1 CI T & C

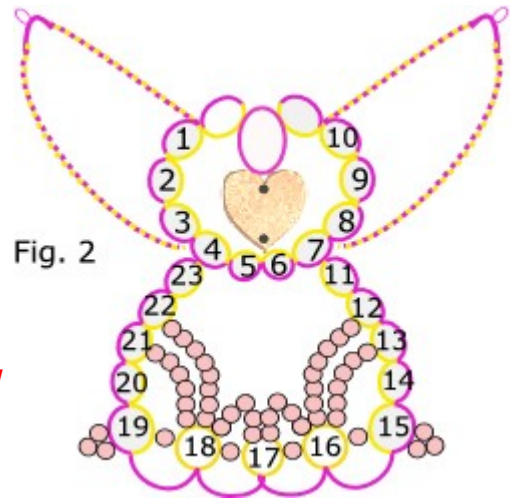


Fig. 2

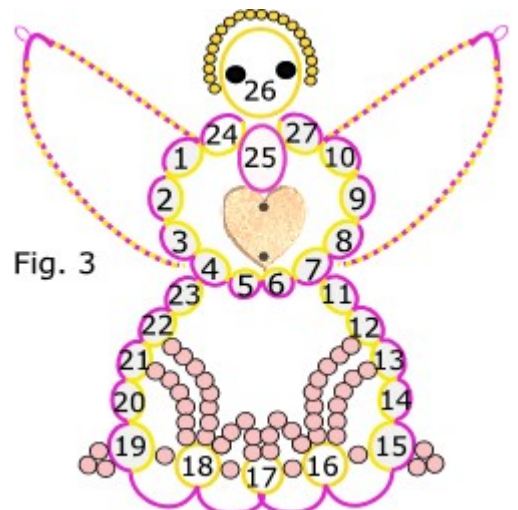


Fig. 3

Small Angel - fits a bangle measuring roughly 2 ½" in diameter

Add 2 black beads (eyes) followed by 1 bead (which will be used on ring 15 in the skirt) to the pink thread (SH1) for the eyes and 6 beads to SH2.

Left Arm (facing) - (SH1)

SR1: 1 vsp 2 vsp 1 / vsp 4 CI

SR2: 1 + (vsp SR1) 2 vsp 1 / 4 CI

SR3: 1 + (vsp SR2) 3 / 3 vsp 1 CI

Hands

SR4: 3 / 4 CI add bead to core thread and keep in place with safety pin (sort of false beaded picot!).

SR5: 3 / 4 CI

Left Arm

SR6: 3 vsp 1 / 1 vsp 3 CI

SR7: 1 + (vsp SR6) 2 vsp 1 / 4 CI

SR8: 1 + (vsp SR7) 2 vsp 1 / 4 CI SS

Wing 1

LCH: X 8

Ch: 1 - 1

LCH: X 16 Lj (vsp SR6) SLT SS

Skirt

SR9: 4 / 4 CI

SR10: 4 / 4 CI

SR11: 4 / 2 LBP (6 beads) 2 CI

SR12: 4 / 4 CI

SR13: 2 BBB 2 / 2 - 2 CI SS

LCH: X 5 RW

R14: 2 + B (SR13) 2 + LBP (SR11) 2 - 2 CI RW

LCH: X 5 RW

R15: 2 + B (R14) 2 B 2 - 2 CI RW

LCH: X 5 RW

R16: 2 + B (R15) 2 LBP (6 beads) 2 - 2 CI RW

LCH: X 5 DNRW SS

SR17: 2 BBB 2 / 2 + B (R16) 2 CI

SR18: 4 / 4 CI

SR19: 4 / 2 + (LBP R16) 2 CI

SR20: 4 / 4 CI

SR21: 4 / 4 CI Lj (vsp SR3) SLT

Wing 2

LCH: X 16

Ch: 1 - 1

LCH: X 8 Lj (vsp SR1) SLT SS

Body

SR22: 3 vsp 1 / 1 + (vsp SR1) 3 CI SLT RW

R23: 6 + (loop holding bead - remove safety pin) 6 CI RW SS

HEAD (2 beads left on shuttle)

R24: 1 + (vsp SR22) 4 LBP (18 beads) 2 MB 16 MB 2 + (LBP) 4 vsp 1 CI SLT SS

Body

SR25: 1 + (vsp R26) 3 / 3 + (vsp SR8) 1 CI T & C

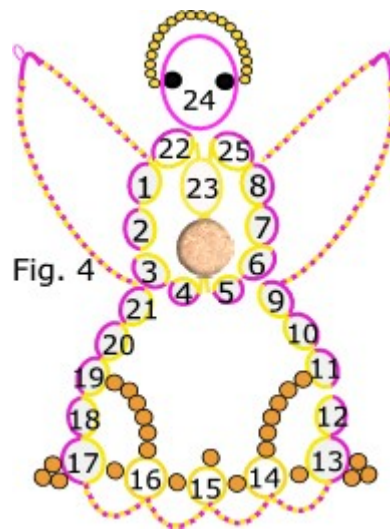


Fig. 4