



[Click for larger picture](#)



[Click for larger picture](#)

**Materials required** – No. 20 tan/brown/white thread, two 1/8" beads (eyes), seed beads - 2 colours for wings, yellow and black for tail. Also – safety pins or paperclips (7), 1" gauge and some short lengths of contrasting thread to use as 'markers'.

### Abbreviations

R	ring	Ch	chain
SR	Split ring	vsp	Very small picot
LBP	Long beaded picot	LTP	Long twisted picot
MT	Marker thread	SS	Switch shuttles
T & C	Tie and cut	B	bead
MB	Move bead along core thread		
LCH	Lock chain (first half ds normal, second half wrapped)		

### Head

Add two beads to Sh1 before starting (eye beads) and leave on shuttle.

R1: 1 vsp 5 MB 4 LTP (1") 3 LTP (1") 4 MB 5 vsp 1 CI

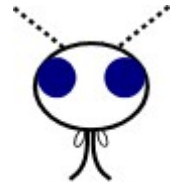


Fig. 1

### Top Body Section

SR2 (1<sup>st</sup> side): 1 + (vsp R1) 1 (MT) 2 LBP (48 beads add pin) 2 LBP (11 beads – loop to lie Bet beads 32 & 33) 2 + (1<sup>st</sup> LBP) 3 vsp 1

SR2 (2<sup>nd</sup> side): 1 + (vsp R1) 1 (MT on Sh2) 2 LBP (48 beads add pin) 2 LBP (11 beads – loop to lie Bet beads 32 & 33) 2 + (1<sup>st</sup> LBP) 3 vsp 1 CI SS

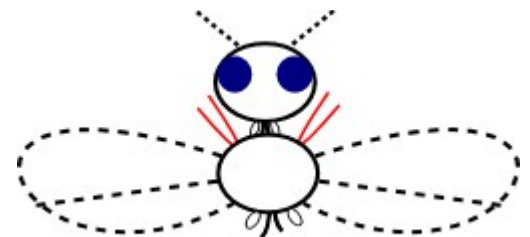


Fig. 2

### Lower Body/Tail

#### Side 1

**Please note** - all LBP on the following chain are made on the **CORE THREAD** – see techniques. Use SH2.

Ch: 1 + (vsp SR2) 1 (MT on Ch) 2 LBP (5 yellow B) 2 LBP (6 black B) (MT on Ch) 3 LBP (8 yellow B) 3 LBP (9 black B) 3 LBP (7 yellow B) 2 LBP (5 black B) 3 LBP (3 yellow B) 10

#### Side 2

Ch: Lj (last LBP with 3 B's) 3 Lj (LBP – 5 B's) 2 Lj (LBP – 7 B's) 3 Lj (LBP – 9 B's) 3 Lj (LBP – 8 B's) 3 (MT on Ch) 2 Lj (LBP – 6 B's) 2 Lj (LBP – 5 B's) 2 (MT on Ch) 1 + (vsp SR2) 1 T & C base SR2

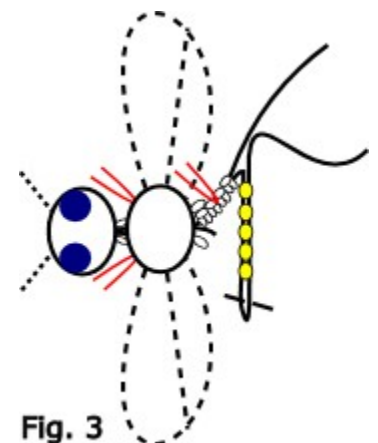


Fig. 3

**Legs** – remove MT and take thread through space leaving 12" for the chain. Tie overhand knots to finish.

#### Top pair

LCH: x 3 CH: 3 LCH: x 3 T & C

#### Remaining 4 legs

LCH x 2 CH: 3 LCH: x 3 T & C