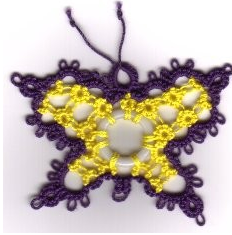
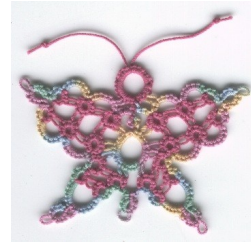


2 Butterflies worked on Small Curtain Ring

© Jane Eborall Updated - October 2006



[Click here](#)



[Click here](#)

This simple butterfly worked on a small curtain ring and measuring 2¼" by 1½" needs no sewing in of ends in version 1 as they form the feelers. A second version can be made without picots on the chains. See picture on the right above.

Materials: No. 20 thread, small ½" curtain (cabone) ring which is not required if working version 2.

Skills required: Knowledge of split rings.

Abbreviations

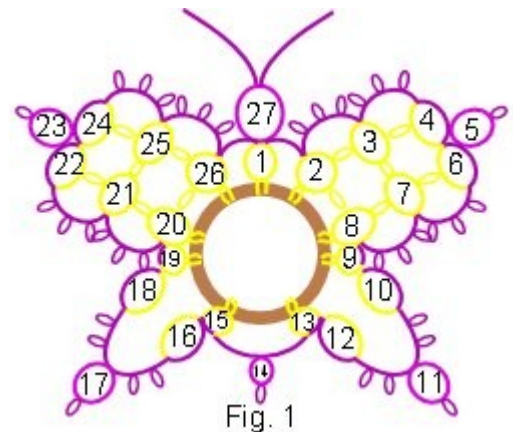
R	Ring	Ch	Chain	- or p	picot
SR	Split Ring	/	after / make 2nd half Vlp of SR		Very long picot
SS	Switch shuttles	CR	curtain ring (cabone)	RoCh	Ring on chain

Version 1

NB When starting this butterfly hide Wsh1 end but do not tat over the chain end. Leave a length of approximately 18" with which to work the final SR

Two shuttles required throughout. The red text is for a butterfly (either version) without picots on the chains.

R1: 2 + (CR) 2
 Ch: 3
 R2: 2 + (CR) 2 - 2 - 2
 Ch: 2 - 2 - 2 - 2 **or 2 - 6**
 R3: 2 + (R2) 2 - 2 - 2
 Ch: 2 - 2 - 2 - 2 **or 8**
 SR4: 2 + (R3) 2 / 3 - 1 Rw SS
 R5: 1 + (SR4) 4 - 4 - 1 Rw SS
 SR6: 2 - 2 / 1 + (R5) 3
 Ch: 2 - 2 - 2 - 2 **or 8**
 R7: 2 + (SR6) 2 + (R3) 2 - 2
 Ch: 2 - 2 - 2 - 2 **or 8**
 R8: 2 + (R7) 2 + (R2) 2 + (CR) 2
 SR9: 2 + (CR) 2 - 2 / 2
 SR10: 2 - 2 / 4
 Ch: 2 - 2 - 2 - 1 SS **or 6 - 1 SS**
 RoCh11: 1 + (Ch) 4 - 4 - 1 SS
 Ch: 1 + (RoCh) 2 - 2 - 2 **or 1 + (RoCh) 6**
 SR12: 2 + (SR10) 2 / 4
 SR13: 2 + (SR9) 2 + (CR) 2 / 2
 Ch: 2 SS
 RoCh14: 4 - 4 SS
 Ch: 2
 SR15: 2 + (CR) 2 - 2 / 2



SR16: 2 - 2 / 4

Ch: 2 - 2 - 2 - 1 SS or 6 - 1 SS

RoCh17: 1 + (Ch) 4 - 4 - 1 SS

Ch: 1 + (RoCh) 2 - 2 - 2 or 1 + (RoCh) 6

SR18: 2 + (SR16) 2 / 4

SR19: 2 + (SR15) 2 + (CR) 2 / 2

R20: 2 + (CR) 2 - 2 - 2

Ch: 2 - 2 - 2 - 2 or 8

R21: 2 + (R20) 2 - 2 - 2

Ch: 2 - 2 - 2 - 2 or 8

SR22: 2 + (R21) 2 / 3 - 1 Rw SS

R23: 1 + (SR21) 4 - 4 - 1 Rw SS

SR24: 2 - 2 / 1 + (R23) 3

Ch: 2 - 2 - 2 - 2 or 8

R25: 2 + (SR24) 2 + (R21) 2 - 2

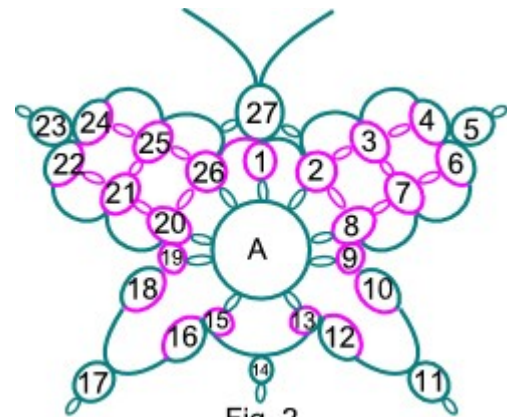
Ch: 2 - 2 - 2 - 2 or 6 - 2

R26: 2 + (R25) 2 + (R20) 2 + (CR) 2

Ch: 3 + (base R1)

Using Wsh2 and the starting end and covering the cut end of Wsh1 make

SR27: 2 + (1st p of second Ch) 10 / 2 + (last p of second last Ch) 10 Close and cut ends to form feelers.



Version 2 - with tatted centre

Leave a short end for finger tatting the second side of SR1

RA: 2 - 4 - 2 - 4 - 6 - 4 - 2 - 4 - 2

SR1: 2 / 2 using end to finger tat second side Rw and add in the second colour for the core thread.

Now continue from first chain of version 1 but joining to picots on RA instead of a plastic ring.

After the chain following SR26 Rw and then work

R27: 2 + (1st p of second Ch) 10 Vlp (feelers) 10 2 + (last p of second last Ch) Cl. Cut ends to form feelers.

Any problems please contact me on [this address](#).