



[Click here](#)

Abbreviations

R	ring	CH	chain
SR	split ring	SCH	split chain (optional)
vsp	Very small picot	B	Bead moved into place
+ B	Add bead to picot before joining	LBP	long beaded picot
FP	false picot	LJ	lock join
LCH	First half ds as normal, second half ds wrapped (not turned). X denotes number of times to work this combination.		

I suggest for the long beaded picot that the beads are added before the picot is made – see the technique page for adding beads to a long picot.

The following patterns are for the size of buttons given when worked with a tight tension. I suggest that it would be a good idea to do the tatted and then find a button that fits!

Pattern for button measuring 7/8"



[Click here](#)

Required - 1 shuttle – you can finger tat the second half of the SR, no. 20 thread & beads. Add 1 B to shuttle thread (if using a split chain) & 32 to chain thread before starting. Start leaving a length of a yard for later.

Centre ring

R: 1 - 1 - 1 - 1 - 1 - 1 - 1 - 1 - 1 Cl (7 picots)

Round 1

SR1: FP 2 - 2 / FP 2 - 2 Cl RW

CH: vsp 2 - 3 - 2 RW

*R2: 2 + (previous R) 2 + (centre ring) 2 - 2 Cl RW

CH: 2 - 3 - 2 RW

Repeat from * 5 times

R8: 2 + (R7) 2 + (centre ring) 2 + (SR1) Cl RW

SCH: 2 - 3 / Lj (vsp first CH) 2 Move B on shuttle thread close to CH and take the other thread through B and continue with SR1 of round 2. See fig. 1.

NB You may need to add a few beads to the short end for the chains in round 2 before you run out of thread.

If you don't want to make a split chain finish the round with a regular chain and T & C.

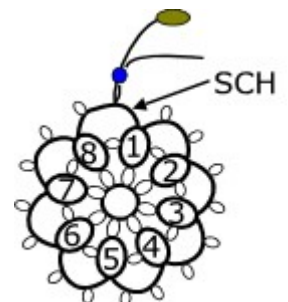


Fig. 1

Round 2

When the short end thread runs out add in a chain thread with 32 beads

SR1: 2 - 2 / 2 - 2 CI RW

If you tied and cut at the end of round 1 this will be a ring of 2 - 2 + B to picot on round 1 2 - 2

*Ch: B 2 LBP (5 beads) 1 B 1 + (LBP) 2 RW

R2: 2 + B (previous R) 2 + B (next p round 1) 2 - 2 CI RW

Repeat from * 13 times. See fig. 2.

*Ch: B 2 LBP (5 beads) 1 B 1 + (LBP) 2 RW

R16: 2 + B (previous R) 2 + B (next p round 1) 2 + B (SR1) 2 CI RW

*Ch: B 2 LBP (5 beads) 1 B 1 + (LBP) 2 T & C base SR1

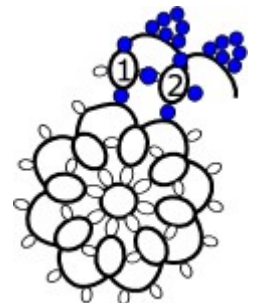
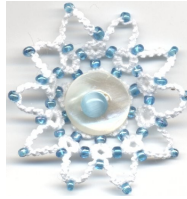


Fig. 2

Pattern for button measuring approximately 5/8"



[Click here](#)

Required - 1 shuttle - you can finger tat the second half of the SR, no. 20 thread, beads. Add 1 B to shuttle thread before starting. Leave a length of 1 1/2 yards for later.

Round 1

R1: 4 vsp 4 vsp 4 vsp 4 vsp 4 CI RW

CH: vsp 4 - 4 Lj (vsp R) * - 4 - 4 Lj (next vsp R) Repeat from * 3 times joining to vsp at start - 9 picots. RW

Move B on shuttle close to CH just worked and take length of thread through B.

See fig. 3.

Round 2

SR1: 2 - 2 / 2 - 2 CI add 20 beads to short end and RW

*LCH: B X 4 B X 4 RW

R2: 2 + B (p last R) 2 + B (next p on CH of round 1) 2 - 2 CI RW. Repeat from * 7 times.

LCH: B X 4 B X 4 RW

R10: 2 + B (p last R) 2 + B (next p on CH of round 1) 2 + B (SR1) 2 CI RW

LCH: B X 4 B X 4 T & C to base SR1. See fig. 4.

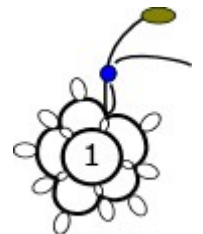


Fig. 3

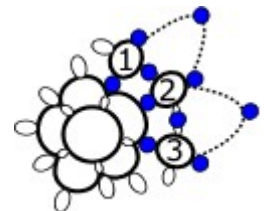


Fig. 4

Pattern for button measuring 1/2"



[Click here](#)

Required - 2 shuttles with 1 1/2 yards of thread left as a loose end until SH2 is needed, no. 20 thread & beads.

Centre

R1: 3 - 3 CI RW

CH: vsp 3 - 3 RW

R2: 3 + (p R1) 3 CI RW

*CH: - 3 - 3 RW

R3: 3 + (p R1) 3 CI RW

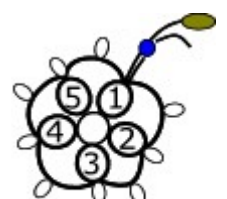


Fig. 5

Repeat from * twice – 5 rings.

CH: – 3 – 3 Lj vsp above R1. Move 1 bead to lie next to the Lj and take the SH2 thread through the bead. Add 22 beads to the loose end and wind onto SH2. Continue using SH1.

See fig. 5

Round 1 - B @ back of hand

SR1: 1 vsp 3 B 3 / 1 Cl SS

*CH: 1 B 1 SS B @ back of hand

SR2: 3 B 3 / 1 Lj + B (next p centre) 1 Cl SS

Repeat from * 8 times followed by

CH: 1 B 1 + vsp SR1 T & C. See fig. 6

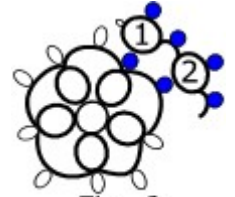


Fig. 6

Pattern for button measuring 3/8"



[Click here](#)

Required - 1 shuttle and 1 yard of chain thread. Add 1 bead to shuttle thread.

Centre

R1: 2 – 2 Cl RW

CH: vsp 2 – 2 Cl

R2: 2 + (p R1) 2 Cl RW

*CH: – 2 – 2 RW

R3: 2 + (p R1) 2 Cl RW

Repeat from * twice (5 rings)

CH: – 2 – 2 Lj vsp above R1

Move bead to lie next to the Lj and take the chain thread through the bead. Now add 19 beads to chain thread and continue.

Round 1

CH: 2 B 2 Lj + B (next p centre) B 2 B 2 Lj + B (next p centre). Continue all round joining last CH to base of first CH above B. Move final bead into place and T & C.

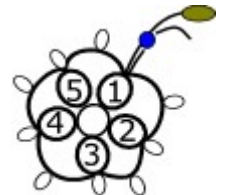


Fig. 7

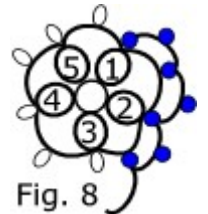


Fig. 8

Place tatting behind button and using a sewing needle and thread bring a length of thread up through a hole, add beads of your own choice and then take the thread down through the opposite hole. This can be repeated for added security. A safety pin or other brooch backing can be sewn or tied onto the back if required.