



[Click here for larger picture](#)



[Click here for larger picture](#)

Norman the rooster was the result of the first Tat It And See of 2010. Named Norman after the friend who constantly gives me eggs which are 'home grown'. The eggs are exceptional as Norman talks to his 'girl's. There are links [here to his dear wife](#) Aileen (my best crafting friend) and the children!

Abbreviations

R	ring	Ch	chain
SR	split ring	RW	reverse work
Cl	close	P or -	picot
vsp	very small picot	DNRW	do not reverse work
LP	long picot		

Materials required. Brown, red and variegated. 1 bead ($\frac{1}{8}$ ") for eye.

Tail – 2 shuttles using variegated thread. Start with top row

Row 1

R1: 6 vsp 2 – 3 Cl

SR2: 3 – 3 / 6 Cl

SR3: 3 – 3 / 6 Cl

SR4: 4 / 4 Cl RW

Ch: 16 Tie an overhand knot and cut leaving ends for feathers

Row 2

R5: 3 + (p on R1) 3 vsp 2 – 2 Cl

SR6: 2 – 2 / 2 + (SR2) 2 Cl

SR7: 2 – 2 / 2 + (SR3) 2 Cl

SR8: 4 / 4 Cl RW

Ch: 14 Tie an overhand knot and cut leaving ends for feathers.

Row 3

R9: 2 + (p on R5) 2 vsp 2 – 2 Cl

SR10: 2 – 2 / 2 + (SR6) 2 Cl

SR11: 4 / 2 + (SR7) 2 Cl RW

Ch: 12 Tie an overhand knot and cut leaving ends for feathers.

Row 4

R12: 2 + (p on R9) 2 vsp 4 Cl

SR13: 4 / 2 + (SR10) 2 Cl

SR14: 3 / 3 Cl RW

Ch: 10 Tie an overhand knot and cut leaving ends for feathers.

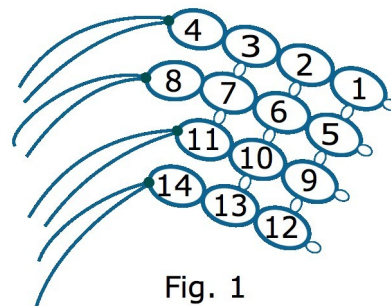


Fig. 1

Wing – 2 shuttles

R1: 1 – 5 vsp 3 – 3 CI

R2: 3 + (R1) 4 – 2 – 2 – 4 – 3 CI

SR3: 3 + (R2) 3 / 1 – 5 CI DNRW SS

Ch: vsp 2 vsp 8 RW

R4: 4 + (p on SR3) 2 + (p on R1) 4 CI RW

Ch: picot 10 Lj (vsp R1) 4 – 6 RW

R5: 4 + (2nd p R2) 4 CI RW

Ch: 4 – 4 RW

R6: 4 + (3rd p R2) 4 CI RW

Ch: 4 DNRW SS

SR7: 3 – 1 / 2 – 2 CI

R8: 1 + (SR7) 4 vsp 4 – 1 CI

SR9: 1 + (R8) 3 / 2 + (SR7) 2 CI DNRW SS

Ch: 4 RW

R10: 4 + (3rd p R2 same p as R6) 4 CI RW

Ch: 4 vsp 4 RW

R11: 4 + (4th p R2) 4 CI RW

Ch: vsp 10 Lj (vsp @ base R3) RW SS

Head – continue

Ch: 2 + (vsp Ch after SR3) 10 DNRW SS

R12: 1 vsp 2 vsp 3 – (to take eye B) 2 CI RW

Change the thread on the chain shuttle to red (this will make the next Ch red)

Ch: 4 DNRW SS

R13: 5 – 3 – 2 CI DNRW SS

Ch: 3 DNRW SS

R14: 3 + (R13) 5 – 5 – 3 CI DNRW SS

Ch: 3 DNRW SS

R15: 3 + (R14) 3 – 4 – 2 CI DNRW SS

Ch: 3 DNRW SS

R16: 2 + (R15) 4 CI DNRW SS

Ch: 4 vsp 1 SLT DNRW

Beak

R17: 1 + (vsp on Ch) 2 – 1 vsp 1 CI SLT DNRW

Head & Crop

Ch: 1 + (vsp R17) 1 RW

R18: 4 + B (3rd p R12) 2 + (2nd p R12) 6 CI RW SS

SR19: 10 / 4 CI SS

Change colour from red to brown on Sh2. All Lp on next chain are ½".

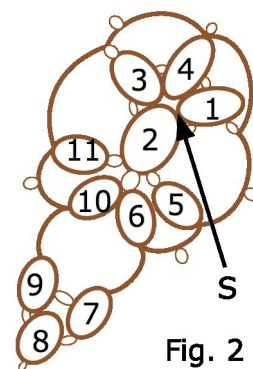


Fig. 2

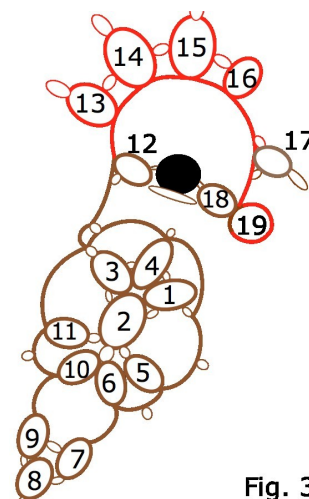


Fig. 3

Neck Ruff

Ch: vsp 1 Lp 1 Lp 1 Lp 1 Lp 1 Lp 1 Lj (join btwn R12 & R18 – below eye)

vsp 1 Lp 1 Lp 1 Lp 1 Lj (vsp R12) turn work SS

Ch: 5 Lj (vsp last Ch above join btwn R12 & R18) 1 + (p above R4 of wing – holding wing on top of work) 6 Lj (1st vsp last Ch) RW. Pull Lp's to front. SS Continue with

Front of Body

SR20 – SR23: 3 / 3 CI

SR24: 3 / 1 + (Ch btwn R1 & R5 on wing) 2 CI

SR25 & 26: 3 / 3 CI

SR27: 3 / 2 + (Ch btwn R5 & R6 on wing) 1 CI

SR28 – 31: 3 / 3 CI RW SS

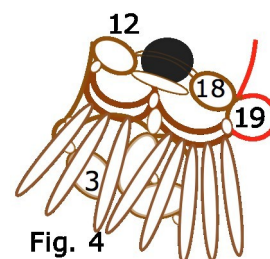


Fig. 4

Leg & Lower Back

R32: 3 vsp 3 CI RW

Ch: 12 vsp 2 SS DNRW

R33: 2 + (vsp Ch) 1 - 1 - 1 - 4 - 1 CI SS DNRW

Ch: 10 Lj (vsp R32) 6 Lj (vsp R8 on **wing**) 4 + (vsp R12 on tail) 3 + (vsp R9 on tail) 4 + (vsp R5 on tail) 4 + (vsp R1 on tail) 3 Lj (Ch btwn R10 & R11 on wing) 4 Lj (vsp base R11) T & C

