

## [HOME](#) Double Core Single Shuttle Split Ring with Two Colours TattingChic 2009

Or how to crawl out of a round while using 2 colours and keep the SSSR one colour!

To see this technique as work in progress please [visit this link](#).

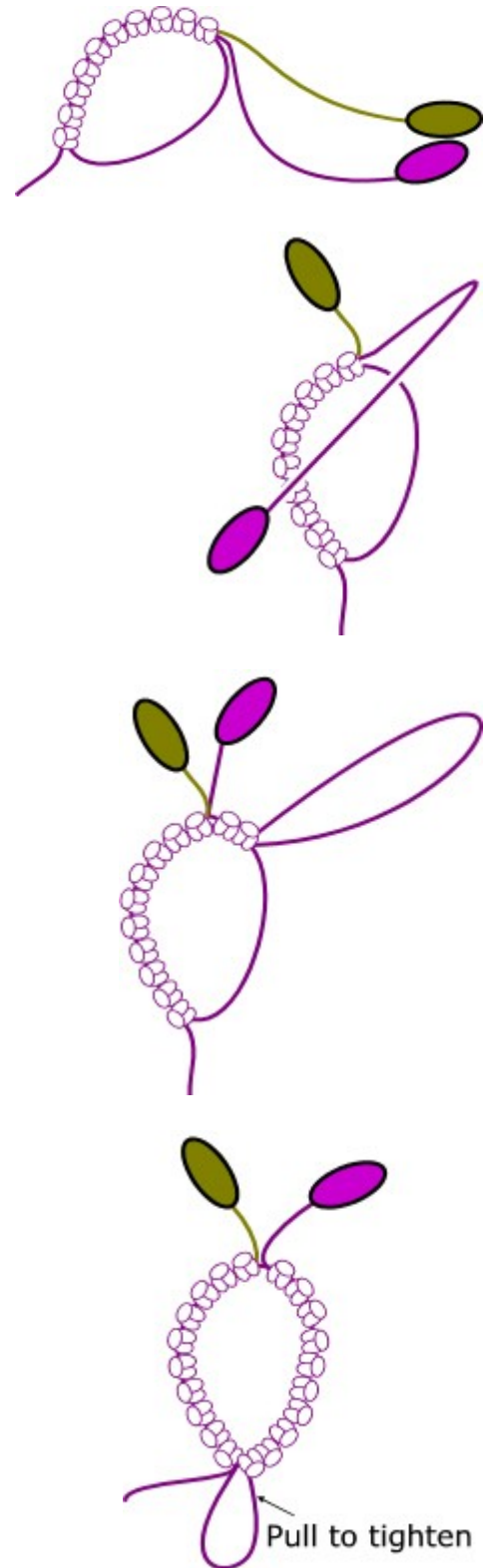
Using the colour you want to show as the core thread wrap this round the hand as if starting a ring. Take **BOTH** shuttles held together and tat using regular double stitches to make the first half of the single shuttle split ring.

Drop the shuttle with the thread which has been carried through the first part of the ring (the colour which will not show).

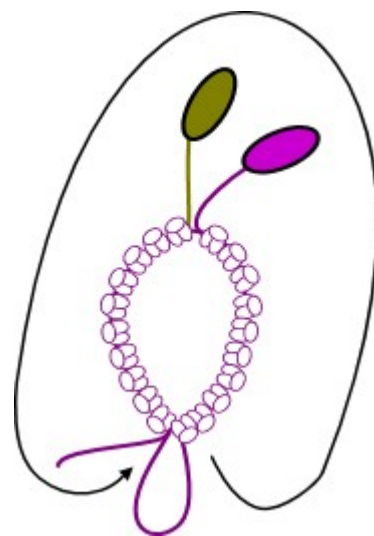
Pull out a loop of thread from the other shuttle (working shuttle). You will hold this loop as if it were a shuttle.

Tat normally the remaining ds using the loop/shuttle.

Close the ring using the part of the loop thread which makes it tighten up.



Now open the loop and take it over the ring and the two shuttles to the far side of the ring you have just made.



Take hold of the working shuttle and pull to take up all the slack from the loop which disappears as it tightens up at the base of the ring.

